

Schools Active Movement

Supported by



Happier



Healthier



More Active

Impact of lockdown report



Teachers indicate that pupils are reporting a range of **concerning physical and emotional issues** after the latest lockdown

In April 2021, the **Schools Active Movement (SAM)** launched a national survey. Headteachers, PE coordinators and PE teachers across England were asked what they had noticed about their pupils since the easing of the third national lockdown in March, when all children had been able to return to school.

2,647

schools completed the survey during the five days

94

SAM member areas took part (School Sport Partnership areas)

30

Active Partnership county areas were represented

All nine regions were represented by at least **three Active Partnership areas** and at least **nine SAM Member areas**

Schools taking part by region:

NE	183	EM	293	L	416
NW	626	WM	243	SE	159
Y&H	383	E	136	SW	185

Schools Active Movement is a voluntary organisation that supports not-for-profit organisations working with schools across England helping children be happier, healthier and more active. Our members work with 11,900 schools and over 3 million children.



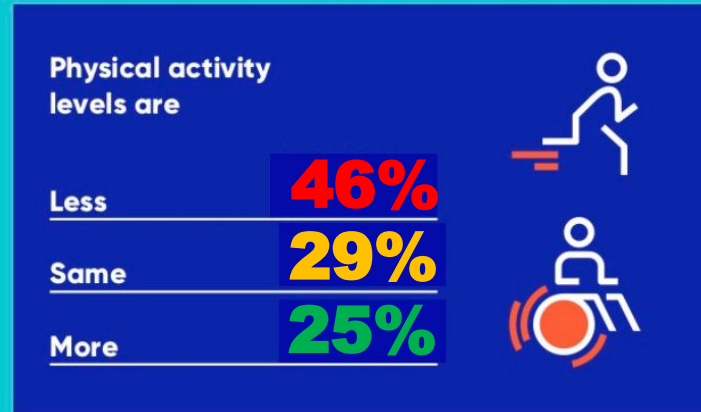
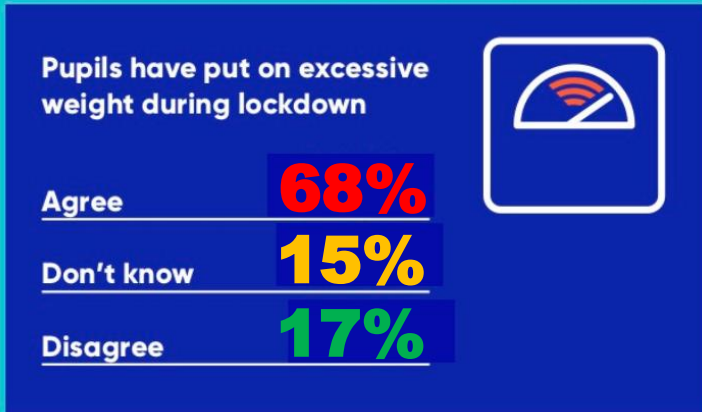
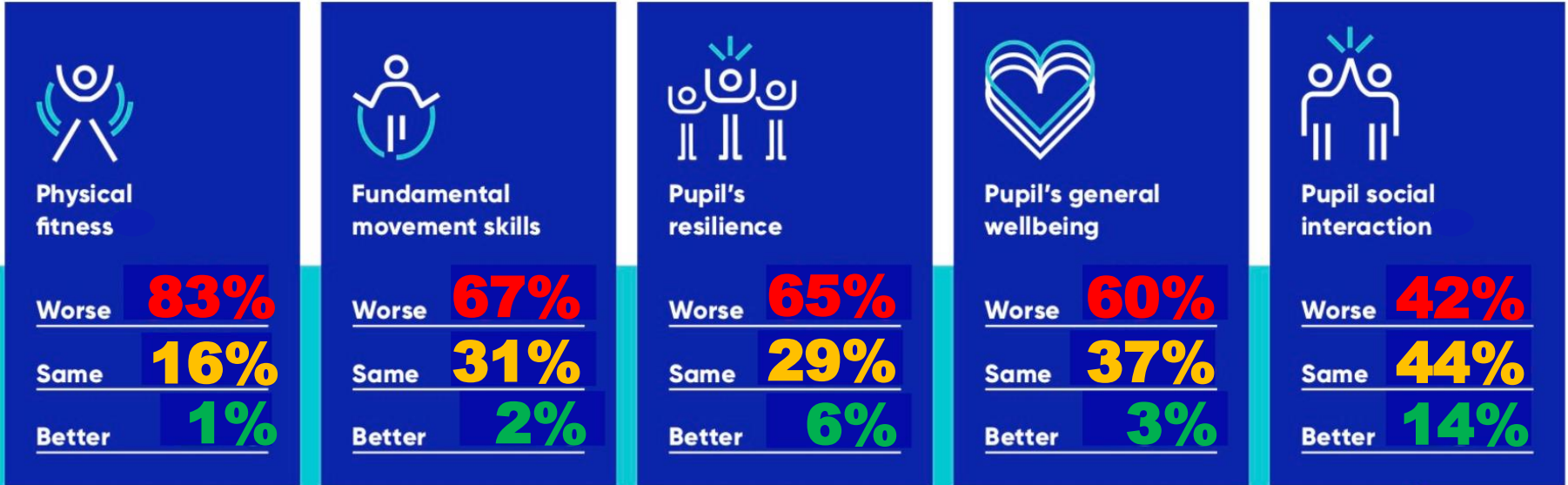
@SchsActiveMment



Click here to join the LinkedIn group

Lincolnshire data

Teachers have noticed a range of concerning issues since returning to school on 8 March, following the third national lockdown...



To ensure all of the criteria were met, **Schools Active Movement** engaged the **Koboca School Consultation System**, which has a unique way of collecting and presenting the data in real time at a local, regional and national level. It can break down the data into specific filter groups for deeper analysis.

Collected by SGOs and inspire+ from 178 schools