

OPENING SCHOOL FACILITIES PROGRAMME

Department for Education and Sport England 2021/2022

MORE PEOPLE
MORE ACTIVE
MORE OFTEN

CONTENTS

01

Project Introduction

02

Project Review

03

Project Successes &
Challenges

04

Monitoring &
Evaluation

01

PROJECT INTRODUCTION

MORE PEOPLE
MORE ACTIVE
MORE OFTEN

THE PROJECT BRIEF?

Objective

To support schools to open their sports facilities outside the normal school day (after school clubs, evenings, weekends, and holidays) to allow young people more opportunities to be physically active.

Target Schools – 4 specific criteria to focus on greatest need in the county.

- High percentage of pupils eligible for free school meals.
- Least active.
- Provide more opportunities for pupils with SEND to take part in activities.
- Active Partnerships should also use their local intelligence to identify schools that do not use, or only have limited access to, their school sports facilities outside the school day, as well as identifying the barriers to opening their premises.

WHAT IS THE OPENING SCHOOL FACILITIES PROJECT ?

What is the Opening School Facilities (OSF) project?

Sport England announced in February 2021 that £10.1 million of Department for Education funding (DfE) will be invested into the Active Partnership network, to encourage and support more schools to open their facilities to pupils and the wider community, to enable more children and young people to be physically active.

Active Lincolnshire are responsible for the delivery of this programme across Lincolnshire and have been awarded £107,000 to support the opening up (or wider opening) of facilities as soon as possible this summer term.

Active Lincolnshire will distribute the funding in small grants (maximum of £10,000 per school) to a number of priority schools based on an agreed set of 12 criteria areas.

What is the Programme Timeline?

The OSF programme will work with schools to increase activity levels from 1st June 2021 to 31st March 2022.

Note, DfE required all funding to be committed or spent by the end of August 2021.

02

PROJECT REVIEW

MORE PEOPLE
MORE ACTIVE
MORE OFTEN

PROJECT OVERVIEW

Following interview / application, Active Lincolnshire took the decision to appoint a local consultancy firm to become the Lead Manager(s) for the OSF programme. Details as follows:

- **Craig Mulhall - Mulhall Leisure Consultancy Limited(MLC).**
- **Andy Wilkinson - Assistant Headteacher Carre's Grammar School. (Seconded to MLC).**
- **Andy & Craig have a complimentary skill set.**
- **MLC commenced work on the OSF programme 2nd June 2021.**

PROJECT OVERVIEW

Since the project began in June, we have completed the following work:

- Developed a bespoke selection and evaluation criteria.
- Produced a long list of 42 schools.
- 13 schools shortlisted.
- 13 site visits were completed with 2 further schools having video calls. (Projects at these schools proved to be ineligible).
- 13 OSF funding packs for each school were prepared and distributed.
- 13 Smart Sheets Sport England completed.
- 13 Service Level Agreements produced and circulated.
- 13 Purchase Order numbers completed.
- 13 schools invoices paid by Active Lincs by August 19th 2021.
- £107,000 allocated.

The desired outcomes were:

1. To open up school facilities to more physical activity opportunities in a meaningful & significant way
2. To achieve 100% funding allocation with £0 sent back from Active Lincolnshire to Sport England.

SHORTLISTED SCHOOLS

The schools shown in the table were selected from the long list and were subsequently awarded funding via the OSF programme. Shortlisting of schools was based around the following 12 criteria.

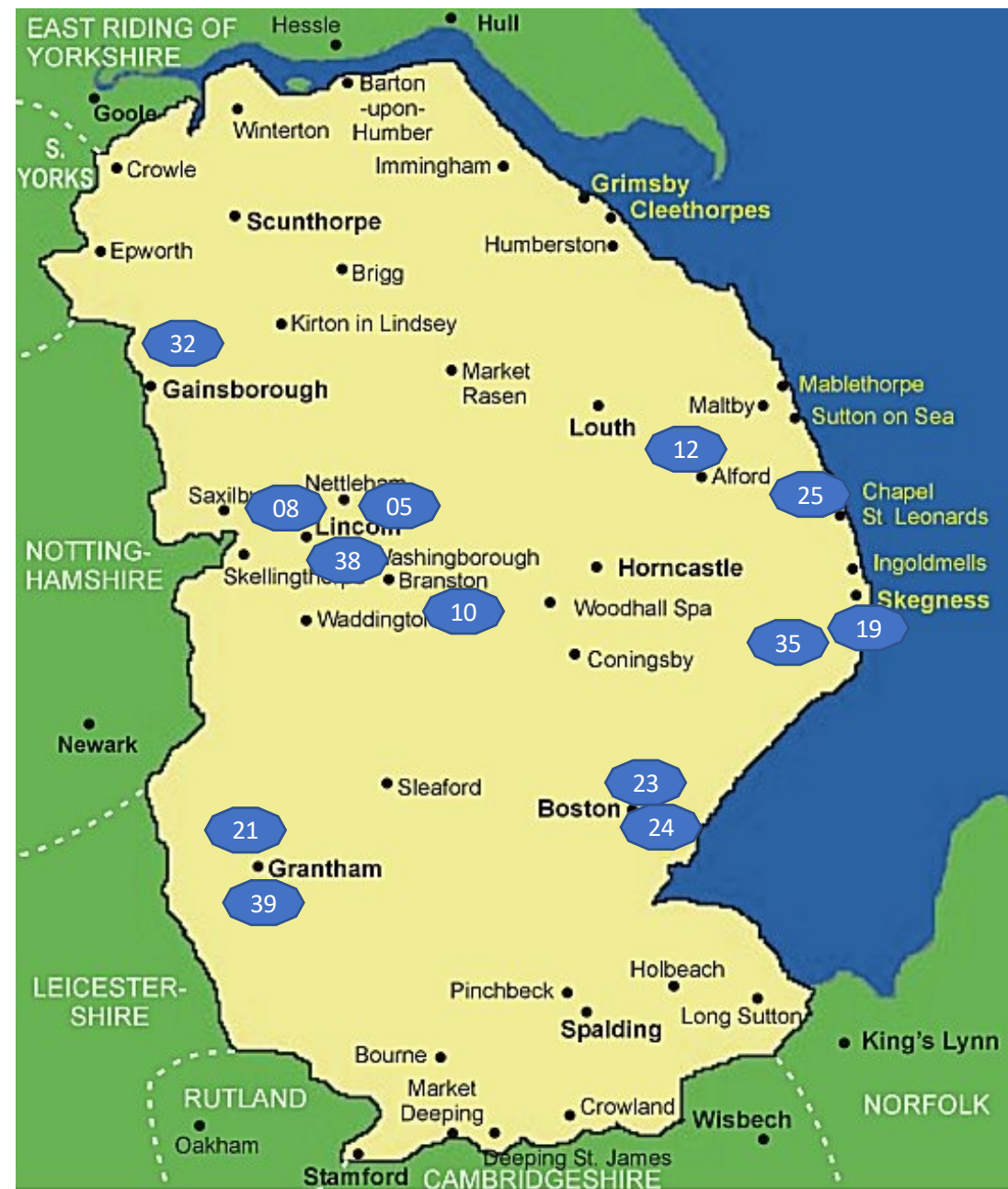
1. Free School Meals
2. Owns a Pool
3. Diversity Indicator
4. % Asian or other
5. HAF
6. Inactivity levels
7. Indices Multiple Deprivation
8. Y6 Obesity levels
9. SGO priority
10. Existing sports provision open
11. Income deprivation affecting children
12. SLT readiness

Ref Number	School Name	Region	Evaluation Score	Rank	Purchase Order	Grant Value
OSF 08	The Priory City of Lincoln Academy	Lincoln	86%	1	AW/CM/27/0721/9	£ 6,925.00
OSF 35	Wrangle Primary	East Lindsey	83%	2	AW/CM/270721/13	£ 8,044.00
OSF 23	Haven High, Boston - Marion Campus	Boston	81%	3	AW/CM/270721/6	£ 6,925.00
OSF 24	Boston Grammar School	Boston	81%	4	AW/CM/270721/2	£ 8,290.00
OSF 10	Branston Academy	North Kesteven	77%	5	AW/CM/270721/3	£ 8,075.00
OSF 38	Priory Witham	Lincoln	75%	6	AW/CM/270721/11	£ 9,596.00
OSF 05	Lincoln Christs Hospital	Lincoln	73%	7	AW/CM/270721/5	£ 8,020.00
OSF 25	Chapel St Leonards	East Lindsey	73%	8	AW/CM/270721/4	£ 7,329.00
OSF 32	Queen Elizabeth's Gainsborough	West Lindsey	73%	9	AW/CM/270721/12	£ 9,700.00
OSF 39	Isaac Newton Primary School Grantham	South Kesteven	73%	10	AW/CM/270721/7	£ 5,152.00
OSF 19	Skegness Grammar	East Lindsey	72%	11	AW/CM/270721/1	£ 9,947.20
OSF 21	Priory Ruskin, Grantham - Manthorpe Site	South Kesteven	67%	12	AW/CM/270721/10	£ 9,926.00
OSF 12	John Spendluffe Alford	East Lindsey	62%	13	AW/CM/270721/8	£ 9,073.00

SCHOOL LOCATIONS

Ref Number	School Name
OSF 08	The Priory City of Lincoln Academy
OSF 35	Wrangle Primary
OSF 23	Haven High, Boston - Marion Campus
OSF 24	Boston Grammar School
OSF 10	Branston Academy
OSF 38	Priory Witham
OSF 05	Lincoln Christs Hospital
OSF 25	Chapel St Leonards
OSF 32	Queen Elizabeth's Gainsborough
OSF 39	Isaac Newton Primary School Grantham
OSF 19	Skegness Grammar
OSF 21	Priory Ruskin, Grantham - Manthorpe Site
OSF 12	John Spendluffe Alford

- 08
- 35
- 23
- 24
- 10
- 38
- 05
- 25
- 32
- 39
- 19
- 21
- 12



SUMMARY OF FUNDING

TYPES, TRENDS & GAPS FOR DEVELOPMENT

Trends

- Cycling
- Football
- Exercise & Movement
- Netball
- Large sports equipment items
- Storage
- Group Exercise Instruction

School Name	Focus Sports	Technology	Type of funding	Gaps for future Development?	Community Use
The Priory City of Lincoln Academy	Exercise & Body movement, Water Polo and Aqua Aerobics	No	Equipment and Group Exercise Instruction Focus - disadvantaged	Fitness Suite Extension Group Exercise Suite New Booking System	Yes – studio use
Wrangle Primary	Swimming & Cycling	Yes	Equipment and Technology Focus – swimming (Moki wristbands for all staff & students)	Replacement Swimming Pool roof Daily Mile Track	Yes – swim lessons
Haven High, Boston - Marion Campus	Cycling	No	Equipment and Storage Focus – cycle to school		
Boston Grammar School	Netball, Basketball, Cricket & Football		Equipment and Storage Focus –increased activity range	Sports Hall rebuild	Yes – sports clubs
Branston Academy	Athletics, Football , Water Polo, Netball & Table Tennis	No	Equipment Focus – increased activity range	Sports Hall / Leisure Centre	Yes – sports clubs
Priory Witham	Exercise & Body movement	No	Equipment and Storage Focus – health & well-being of disadvantaged groups	Fitness Suite Extension Group Exercise Suite New Booking System	Yes – fitness suite and studio
Lincoln Christs Hospital	Exercise & Body movement and Netball	No	Equipment Focus – health & well-being	Fitness Suite Extension 3G resurface Indoor hall floor replacement	Yes – Swimming pool and studio
Chapel St Leonards	Football, Netball, Badminton, Cycling and Basketball	No	Equipment Focus – disadvantaged	Daily Mile Track	Yes – sports clubs
Queen Elizabeth's Gainsborough	Cricket and Football	No	Equipment Focus – increased activity range	Sports Hall refurbishment	Yes – sports clubs
Isaac Newton Primary School Grantham	Cycling	No	Equipment and Storage Focus – cycling for the most disadvantaged	Daily Mile Track	
Skegness Grammar	Netball	No	Equipment Focus – community netball programme	Climbing wall refurbishment	Yes – sports clubs
Priory Ruskin, Grantham	Exercise & body movement	No	Equipment and Group Exercise Instruction Focus – health & well-being	Tennis Court Resurface	Yes – fitness suite and studio
John Spendluffe Alford	Football, Table Tennis, Trampolining and Badminton	No	Equipment Focus – increased activity range	Swimming Pool Rebuild / Refurbishment	Yes – sports clubs

1. Priory City of Lincoln - £6925

Aqua Fit equipment – to specifically target teenage girls to take part in activity. Aqua fit was the top activity (for girls) from the school survey conducted prior to the funding being finalised.

Football Nets – purchased for engaging dis-engaged boys in Y10 and Y11.

Boxercise / Yoga / Fitness classes - purchased for 'hard to reach' Girls

Extended range of activities curriculum & extra-curricular

Fitness suite usage and group exercise classes are now linked to pastoral care for Y10 / Y11 students



K Chen – Head of PE Priory City of Lincoln

- One of our main aims for KS4 students was to get them engaging in physical activities in a fun and non-competitive way especially after the COVID lockdown. Some of our students were anxious about performing in front of others and felt they were not as competitive as some. The funding has allowed us to put on extra sessions with external coaches and buy in equipment to deliver different fun physical activities like 'Dancercise' to 'Boxercise' which has proved successful. We have even been able to purchase new gym equipment to help expand and improve our enrichment programme.
- *"I ran an enrichment club from September to December for students in Y9 to Y11. The club was well attended by a range of students (gender and PP), and they found the range of equipment on offer a big pull to this session. It was good as it also gave myself time to chat to the attendees about a range of issues that they had, thus also fulfilling a pastoral aid to them as well as a physical. To be honest the facilities allowed us to help students maintain their health as it allowed them to improve their wellbeing; mentally, socially and physically."* Mr Moss Head of Year 11

2. Haven High School £6925

Bike to school programme – the funding helped to develop and extend a bike to school scheme for the Year 7 and in particularly the disadvantaged students. Equipment such as cycles, helmets, bike locks and an extended bike shelter helped to develop the scheme within the school.

Link to breakfast club – students are encouraged to attend the breakfast club and were given free food if they arrived by bike.

Health promotion benefits - the school have already reported a marked increase in linked health and educational benefits from the bike to school scheme and the funding will extend this further.

'This funding has promoted - Cycling with care, consideration and confidence' for our students.

(Mr N Bishop Head of PE)



3. Wrangle Primary - £8044

Swimming Pool matting and lighting – this improves the service provision for students and community users. The introduction of new lighting allows for an all-year-round provision for the community.

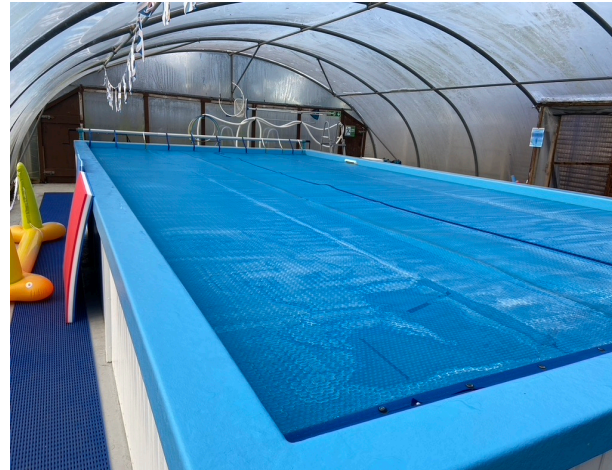
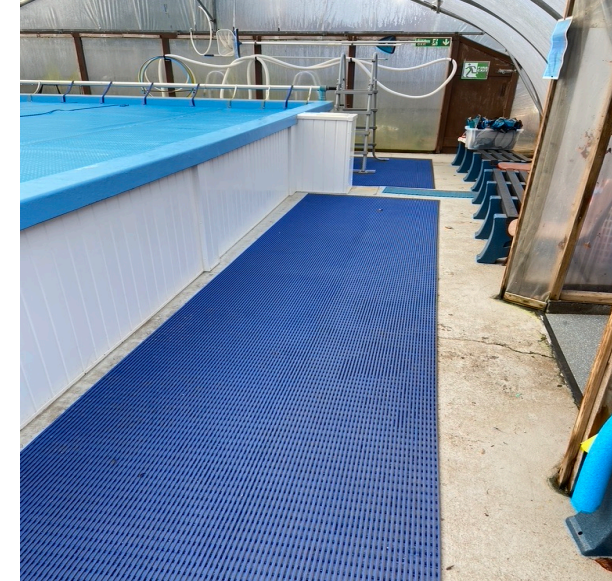
Moki wristbands – a wristband was provided for each student and staff member to track their activity levels within school.

Swimming Pool Plant Service – essential to the continuation of the pool and has improved the water quality.

Bikeability - disadvantaged children who were previously not able to take part are now able to learn how to ride.

'Through the darker months, we have been able to offer swimming lessons for not only our own school children, but those in the local area; without the funding we would not have been able to do this'.

Mr M Petch (Headteacher)



4. Boston Grammar School - £8290

Gated access control – the funding was used to upgrade two key access points for external changing areas.

Basketball – new portable hoops allowed for 3v3 games that can be also be used for training and recreational basketball

Netball – portable posts & nets and markings allows for increased community use and school team use.

Equipment storage – to open up the school site further at weekends, the storage space will allow existing and new sports clubs to base their activity on site.

Lawnmower – a fine turf lawnmower was essential to attracting a new cricket club to base their activity on site.



5. Branston Community Academy - £8075

Swimming equipment – used by the school and community within swimming lessons.

Football – new goals will be used by the school and will attract increased community club usage

Netball – new posts and nets will be used by the school and also will attract increased community club usage

Table Tennis – new tables to develop the already strong reputation for school and club usage.

Athletics – a moveable discus and hammer cage will help the school develop athletes and community club users.

This project has been a fantastic help in upgrading our facilities. The impact of the swimming equipment has led to higher quality PE lessons and more enjoyable community swimming lessons. The table tennis tables have upgraded our lessons and we hope to start an external community club in the near future. The overall impact of the project has been massive.

Mr J Foot (Head of PE)



6. Priory Witham Lincoln - £9596

Fitness equipment – new equipment to encourage community users to take up fitness usage and memberships

New school /community Fitness Suite – specifically targeting the local community within 3 miles.

Lads / Dads & Mums / Daughters – the school are creating fitness programmes to specifically target families to use the fitness facilities.

Community 'fitness & health' initiative for deprived local community



7. Christ's Hospital School Lincoln - £8020

Fitness equipment – new equipment to encourage community users to take up fitness usage and memberships.

Fitness Suite service – required to ensure the equipment is safe to use by students and community users.

Group Exercise Equipment - Body Pump sets were purchased in order to schedule classes that target 'hard to reach' Girls.

Netball – new posts and nets will be used by the school and will attract increased community club usage



8. Chapel St Leonards Primary - £7329

Football – new goals will be used by the school and will attract increased community club usage.

Indoor line marking – making use of an existing hall that is capable of housing a badminton court.

Badminton initiative – school / community – made possible by the new line markings

Netball – new posts and nets will be used by the school and also will attract increased community club usage

Basketball – new portable hoops that can be used for training and recreational basketball

Bikeability - disadvantaged children who were previously not able to take part are now able to learn how to ride.

The number of children attending after school football club has doubled since September. On average 65% of KS2 children have 100% attendance at lunchtime sports activities (tennis/racket sports, basketball, netball – all funded through OSF).

Mr G Almond (Headteacher)



9. QEHS Gainsborough - £9700

Mobile Cricket Nets - new nets will be used by the school and will attract increased community club usage

Football – new goals will be used by the school and will attract increased community club usage

Indoor football goals - new goals will be used by the school and will attract increased community club usage

Netball – new posts and nets will be used by the school and will attract increased community club usage

'The project has allowed us to purchase equipment that has allowed us to transform our curriculum, extra-curricular and community provision. We have been able to host numerous primary and secondary girls football competition (Indoor and Outdoor) that has significantly increase our participation rates'.

Mr J Burge (Head of PE)



10. Isaac Newton Primary Grantham - £5152

Bikeability - disadvantaged children who were previously not able to take part are now able to learn how to ride.

Bike Storage Container – essential to keep the new bikes secure.

Bikeability Training – funding used to train a trainer in the delivery of bikeability.

'28 Y6 students accessed Bikeability 57% of which were FSM students who wouldn't have been able to access this prior to the funding of the bikes'

Mr C Heathcote (Headteacher)



11. Skegness Grammar School - £9948

Netball Posts & Nets – new goals will be used by the school and will attract increased community club usage and re-ignite the local netball league post covid.

Derelict site preparation – turning an old mini tennis area into a two-court netball location.

Anti-Slip Coating – required to ensure a good quality playing surface.

Temporary floodlights – required to ensure clubs and league usage throughout the year.

Our after school Netball club has resumed for girls in Years 7 to 11, we have been able to be the host site for our Coastal Central Venue League fixtures and welcome new players to join the league.

Mrs SJ Smith (SGO Skegness Grammar School)



SJ Smith – SGO Skegness Grammar School

- *"The Opening School Facilities funding has been a major part in providing young people at Skegness Grammar School and the wider community with brand new facilities to put Skegness back on the map for Netball". The impact of COVID-19 saw a major impact on sports across the Country and sadly, the closure of external facilities within the Skegness area. Thanks to a successful application and funds from the Opening School Facilities Funding we have managed to turn a dis-used area at school into two brand new Netball Courts. These netball courts have already had such a positive impact for both our School and the wider community. Our after-school Netball club has resumed for girls in Years 7 to 11, we have been able to be the host site for our Coastal Central Venue League fixtures and welcome County Netball coaches and England Netball stars to the venue to deliver coaching sessions to our students. The project has also allowed the Skegness Senior Netball League to resume which has encouraged former players and new players to join the league. We currently have 7 teams in the league with around 85 players back taking part in Netball.*
- *None of this would have been possible without the Opening School Facilities funding and now we have this fantastic facility we hope to be able to continue to grow the passion for Netball both within school and for our wider community"*

12. Priory Ruskin Grantham - £9926

Fitness equipment – new equipment and full service in readiness for community use.

Basketball – new portable hoops allowed for 3v3 games that can be also be used for training and recreational basketball

Storage container – essential to allow effective safe storage of sports equipment.

Fitness Instructors Qualification – level 2 qualification in readiness to open up for community use.

Cricket – new kit and equipment to promote the sporting links between school and clubs

'Over 60 students are accessing the basketball after-school club as part of this funding. The school has now included basketball on its curriculum following the success of the after-school club' Mr A Gunter (Head of PE)



13. John Spendluffe Alford - £9073

Football – new goals will be used by the school and also will attract increased community club usage.

Table Tennis – new tables to develop the already strong reputation for school and club usage.

Trampoline – new equipment to develop school and community usage.

Badminton nets – new equipment to develop school and community usage.

Volleyball nets – new equipment to develop school and community usage.



J Treasure - Business Manager John Spendluffe Alford

- *'The arrival of Active Lincolnshire funding to refresh important pieces of equipment, has meant that we could renew certain aspects of the PE curriculum and extend the extra-curricular clubs that we offer in school.*
- *The football posts have made junior aged football much more relevant due to the quality of the goals and the ability that we have to move them and change the dimensions of the pitch. They are also used extensively at break/lunchtime for social use and will also be used by the wider community of Alford on an evening when the Sports Hall is hired to local teams.*
- *Table tennis and Badminton equipment is now given a boost with higher quality tables and posts that allows us to extend the club to multiple lunchtime usage. The student participation has increased and that would be a positive for those students who are less into team games but enjoy individual sports.*
- *The trampoline has given us the ability to have large groups of students bouncing during lessons and opening another activity up to a wider variety of students. As has been proven, following the pandemic, the greater the number of students we can have participating in physical activity, the greater the physical and mental health benefits can be.*
- *Active Lincolnshire funding has provided a huge amount of opportunity, excitement and engagement with our students and we would love to be involved in any other funding arrangements should they become available in the future.*
- *We truly appreciate the support that this project has brought to JSTC and the community of Alford'.*

03

***PROJECT
SUCCESSES &
CHALLENGES***

MORE PEOPLE
MORE ACTIVE
MORE OFTEN

PROJECT SUCCESSES

100% commitment and buy in from all 13 schools.

Skegness Grammar – The funding will develop a community netball project that will bring to life adult and junior leagues post covid-19, Back to Netball sessions and after school netball clubs.

Haven High – The funding has enabled the extension of a cycle to school project called Slip-stream which will see in excess of 90 Y7 pupils regularly cycle to and from school.

Wrangle Primary – a small and very rural school will benefit from increased and all-round swimming pool use and also physical activity monitors (Moki wristbands) for all staff & students

Gym facilities will reopen to the community at Priory City of Lincoln, Priory Witham and Priory Ruskin Grantham.

Studios will be used for pupil and community use at many of the schools which will see an increase in girls taking part in regular activity.

PROJECT CHALLENGES

- Timescales – engaging with schools in Term 6 (June & July) when in (11-18 schools) priority was Teacher Assessed Grades (TAG's) was very difficult.
 - i. Raising invoices.
 - ii. Spending monies.
 - iii. Assess all the schools.
 - iv. Compile the funding packages.
 - v. Agree funding levels for each school.
 - vi. Procure equipment/services.
- Ineligible funding elements.
- Restrictions of funding – one of the key objectives was to develop school swimming offers.

EXAMPLES OF FUNDING RESTRICTIONS

Tetford Primary School – declined any involvement as their swimming pool roof works could not be funded

Wrangle Primary School – opportunities to extend opening hours to the community and to other schools were restricted, as pool roof repairs could not be funded.

Several schools were interested in providing a track around the school grounds to enable the safe delivery of the daily mile on an all-year round basis. As this involved ground works, this was not eligible.

Priory Ruskin – were keen to offer more fitness suite opening hours but needed more qualified staff to do so. The training provider could not facilitate this training in the timeframe nor allow the school to pump prime the cost of doing this.

LESSONS LEARNT

Be more strategic. If we had more time to plan out the funding spend, we would have spent more time thinking about the strategic impact across the county. For instance, how could OSF link to other funding streams.

We would have hosted a form of competition for funding if given more time at the front of the project. This would have seen schools competing for funding.

Linked the OSF funding to other Active Lincolnshire initiatives so that those schools who have received funding are tied into taking part.

Be more focused on schools with desire to open to the community. We would target schools that have demonstrated a real desire to open their facilities to increase activity levels for all ages / backgrounds in their local community post covid.

COMMUNICATIONS WITH DEPARTMENT FOR EDUCATION AND SPORT ENGLAND

- Attended a number of progress webinars with the Sport England CYP team (Children & Young People). These webinars were useful as we were able to share ideas with other programme managers.
- The Sport England team were very helpful in responding to our enquires through the programme.
- Successes / challenges were fed back to Sport England via a webinar on Wednesday 22nd September. On this webinar, all 46 active partnerships reported similar challenges and all acknowledged the potential benefits of a third tranche of funding for OSF.

04

MONITORING & EVALUATION

MORE PEOPLE
MORE ACTIVE
MORE OFTEN

SITE VISITS

Site visits to each school to follow up on the OSF programme and to discuss wider involvement with Active Lincolnshire. The site visits also included a physical check of the equipment purchases and programmes implemented.

These took place on the following dates:

- **Wednesday 20th October – Sir Isaac Newton & Priory Ruskin**
- **Wednesday 3rd November – Priory City, Priory Witham and Christ Hospital**
- **Wednesday 10th November - QEHS, Branston**
- **Wednesday 17th November – John Spendluffe, Chapel St Leonards, Skegness Grammar, Wrangle Primary**
- **Wednesday 24th November – Haven High & Boston Grammar**

CONTACT DETAILS

Opening School Facilities Programme Managers

Craig Mulhall Email: craig.mulhall@activelincolnshire.com

Andy Wilkinson Email: andrew.wilkinson@carres.uk